

# TATES

020 7602 6020



## Elsham Road, W14 8HA

**£650,000**

A bright two bedroom flat located on a desirable residential road in the Royal Borough of Kensington & Chelsea. Situated on the second floor of an impressive period property, accommodation comprises a large open plan kitchen and reception room, two double bedrooms and bathroom. Located close to the transport links of Shepherds Bush and Olympia stations.

The flat is located in close proximity to Kensington High Street

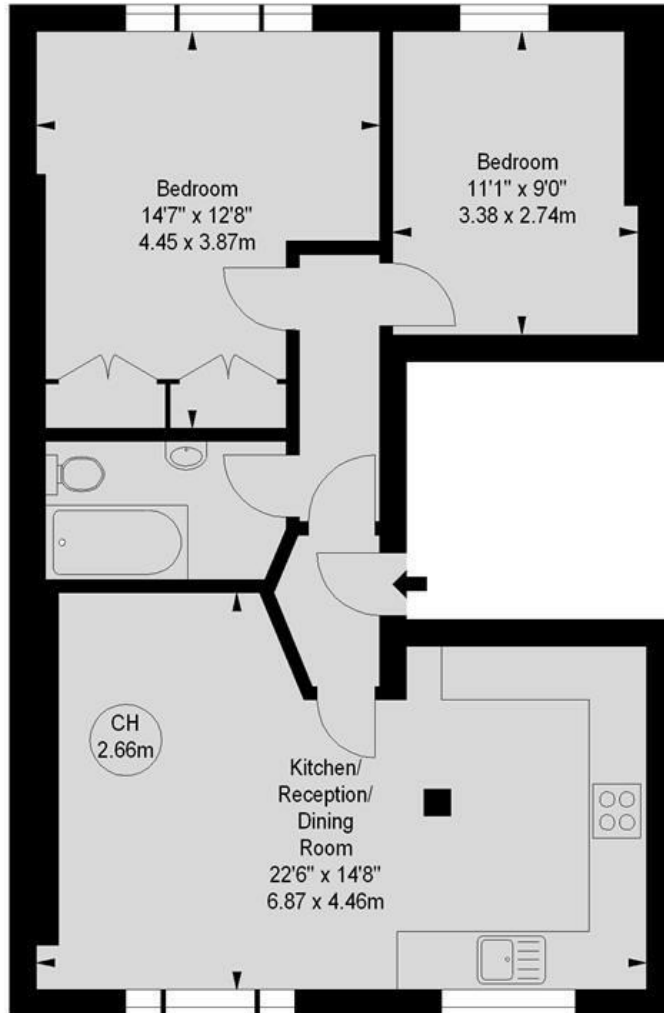
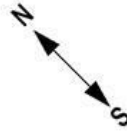
Share of Freehold.

# Elsham Road, W14 8HA

## Elsham Road, W14

Approximate gross internal area  
676 sq ft / 62.80 sq m

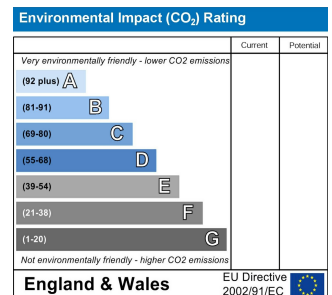
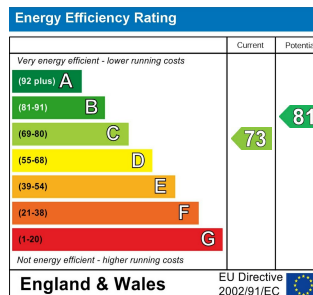
Key :  
CH - Ceiling Height



Second Floor

Illustration For Identification Purposes Only. Not To Scale  
\*Floorplan Drawn According To RICS Guidelines

Whilst these particulars are produced in good faith and are believed to be correct, no guarantee is given, nor any responsibility accepted, by Tates nor by any of its representatives, for their accuracy. The particulars do not constitute part of any offer or contract, and it is recommended that such things as measurements, condition, structure, services, appliances, fixtures and fittings and facilities are all independently assessed by the prospective purchaser or renter of the subject property prior to committing to any contract.



135 Hammersmith Road, West Kensington, London W14 0QL

mail@tatesestates.co.uk

tatesestates.co.uk

Tates (Agents) Ltd. Registered in England and Wales No. 02356337  
Registered Office: Imperial House, 8 Keane Street, London WC2B 4AS

